

LEGEND

- Proposed Tree Planting
(Refer to Plant Schedule).
- Proposed Tree Planting
(Tree location to be confirmed on site at set-out inspection to confirm service location. Refer to Plant Schedule).
- Proposed Nature Strip
(Instant Turf Kikuyu).
- Underground Services
(Refer Civil Engineers Drawings).
- Public Lighting Poles
(Refer Electrical Engineers Drawings).

GENERAL SET OUT, LEVELS & SERVICES
 SET OUT IS TO BE UNDERTAKEN BY A LICENSED SURVEYOR AND APPROVED BY THE SUPERINTENDENT AND RELEVANT COUNCIL OFFICER PRIOR TO CONSTRUCTION. LEVELS SHOWN ON SITE ARE INDICATIVE ONLY AND SHOULD BE CONFIRMED ON SITE.

LOCATION OF ALL SERVICES ARE TO BE CONFIRMED ON SITE. REFER TO CIVIL AND ELECTRICAL DRAWINGS FOR FURTHER DETAIL. THE CONTRACTOR IS TO CONTACT 'DIAL BEFORE YOU DIG' PRIOR TO ANY EXCAVATION OR TREE PLANTING WORKS.

DRAWING ACCURACY
 THIS DRAWING HAS BEEN PREPARED UPON ENGINEERING PLANS WHICH MAY HAVE BEEN SUPERSEDED. THE CONTRACTOR IS TO ADVISED TO CONSULT WITH OTHER TRADES, THE CONSTRUCTION MANAGER AND SUPERINTENDENT SHOULD ANY DISCREPANCIES BECOME APPARENT DURING CONSTRUCTION.

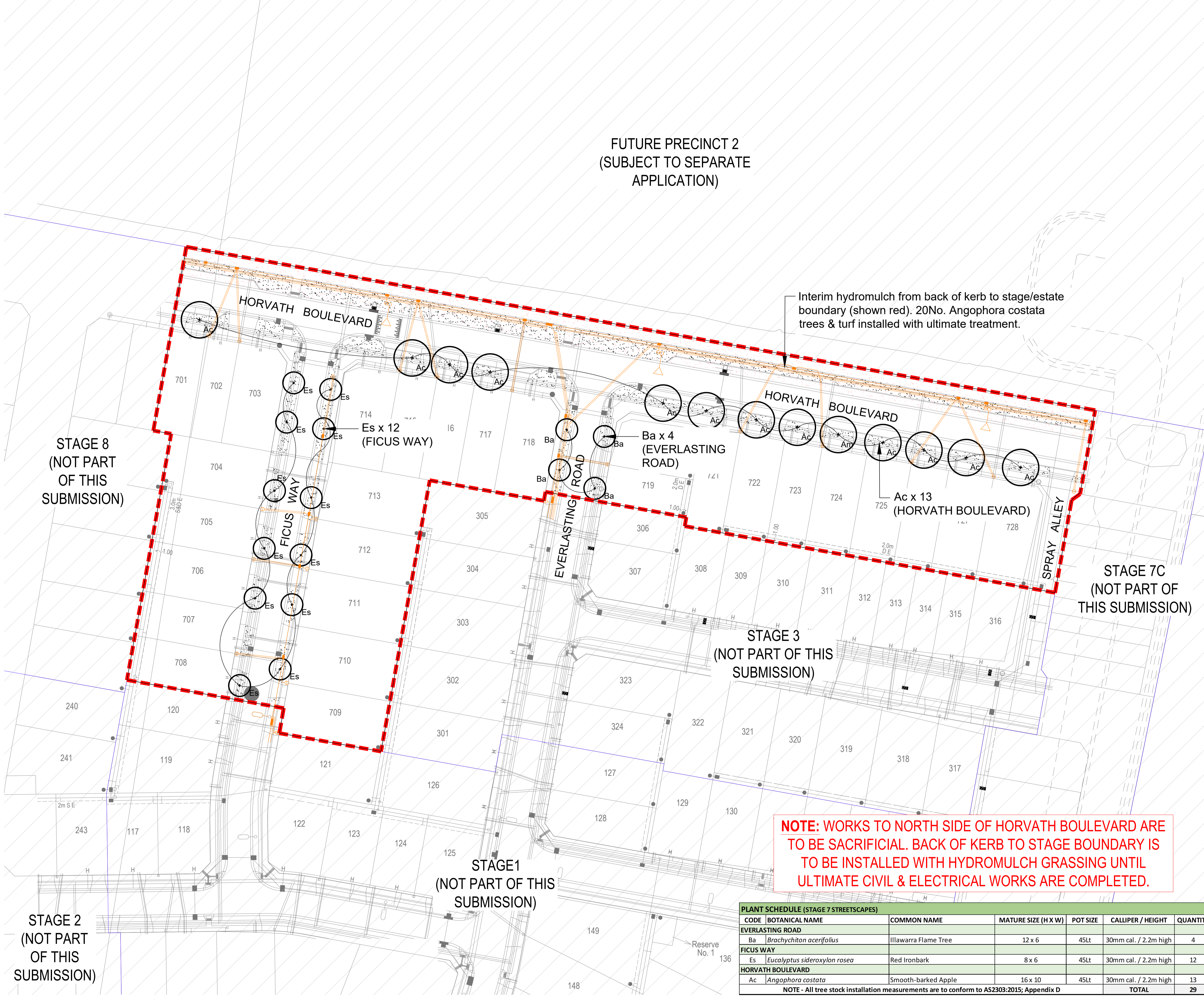
TREE PLANTING OFFSET NOTES
 TREES SHALL NOT BE PLANTED LESS THAN THE FOLLOWING DISTANCES FROM EXISTING ELEMENTS, UNLESS OTHERWISE ADVISED:

- ~ FOOTPATHS - 1.5M
- ~ DRIVEWAYS AND CROSSOVERS - 3.0M
- ~ STORMWATER AND SEWERAGE PITS - 2.0M
- ~ INTERSECTIONS - 10.0M
- ~ SERVICE CROSSINGS - 2.0M
- ~ KERB AND CHANNEL - 1.5M
- ~ STREET LIGHTS - 4.0M

GRASSED AREAS
 ALL GRASSED AREAS ARE TO BE INSTANT TURF KIKUYU UNLESS OTHERWISE NOTED. SHOULD HYDROMULCH BE SPECIFIED, A MIX OF RYE, FESCUE AND KIKUYU SEED IS REQUIRED, UNLESS LOCATED NEXT TO AN ENVIRONMENTALLY SENSITIVE AREA. IN THIS INSTANCE A CLUMPING GRASS SPECIES IS REQUIRED. ALL GRASS AREAS ARE TO BE FREE OF RUTS, DEPRESSIONS AND UNDULATIONS AND CULTIVATED TO A DEPTH OF 150MM PRIOR TO INSTALL OF A 50MM DEPTH LAYER OF IMPORTED TOPSOIL.

FUTURE PRECINCT 2
 (SUBJECT TO SEPARATE APPLICATION)

Interim hydromulch from back of kerb to stage/estate boundary (shown red). 20No. Angophora costata trees & turf installed with ultimate treatment.



STAGE 8
 (NOT PART OF THIS SUBMISSION)

STAGE 7C
 (NOT PART OF THIS SUBMISSION)

STAGE 3
 (NOT PART OF THIS SUBMISSION)

STAGE 1
 (NOT PART OF THIS SUBMISSION)

STAGE 2
 (NOT PART OF THIS SUBMISSION)

NOTE: WORKS TO NORTH SIDE OF HORVATH BOULEVARD ARE TO BE SACRIFICIAL. BACK OF KERB TO STAGE BOUNDARY IS TO BE INSTALLED WITH HYDROMULCH GRASSING UNTIL ULTIMATE CIVIL & ELECTRICAL WORKS ARE COMPLETED.

PLANT SCHEDULE (STAGE 7 STREETSCAPES)							
CODE	BOTANICAL NAME	COMMON NAME	MATURE SIZE (H X W)	POT SIZE	CALLIPER / HEIGHT	QUANTITY	
EVERLASTING ROAD							
Ba	<i>Brachychiton acerifolius</i>	Illawarra Flame Tree	12 x 6	45Lt	30mm cal. / 2.2m high	4	
FICUS WAY							
Es	<i>Eucalyptus sideroxylon rosea</i>	Red Ironbark	8 x 6	45Lt	30mm cal. / 2.2m high	12	
HORVATH BOULEVARD							
Ac	<i>Angophora costata</i>	Smooth-barked Apple	16 x 10	45Lt	30mm cal. / 2.2m high	13	
NOTE - All tree stock installation measurements are to conform to AS2303:2015; Appendix D						TOTAL	29